

Horizontal Sliding Door

Galvanized Metal Single Slide or Bi-Parting
Power Operated Cooler or Freezer

Data Sheet

Models 503-506

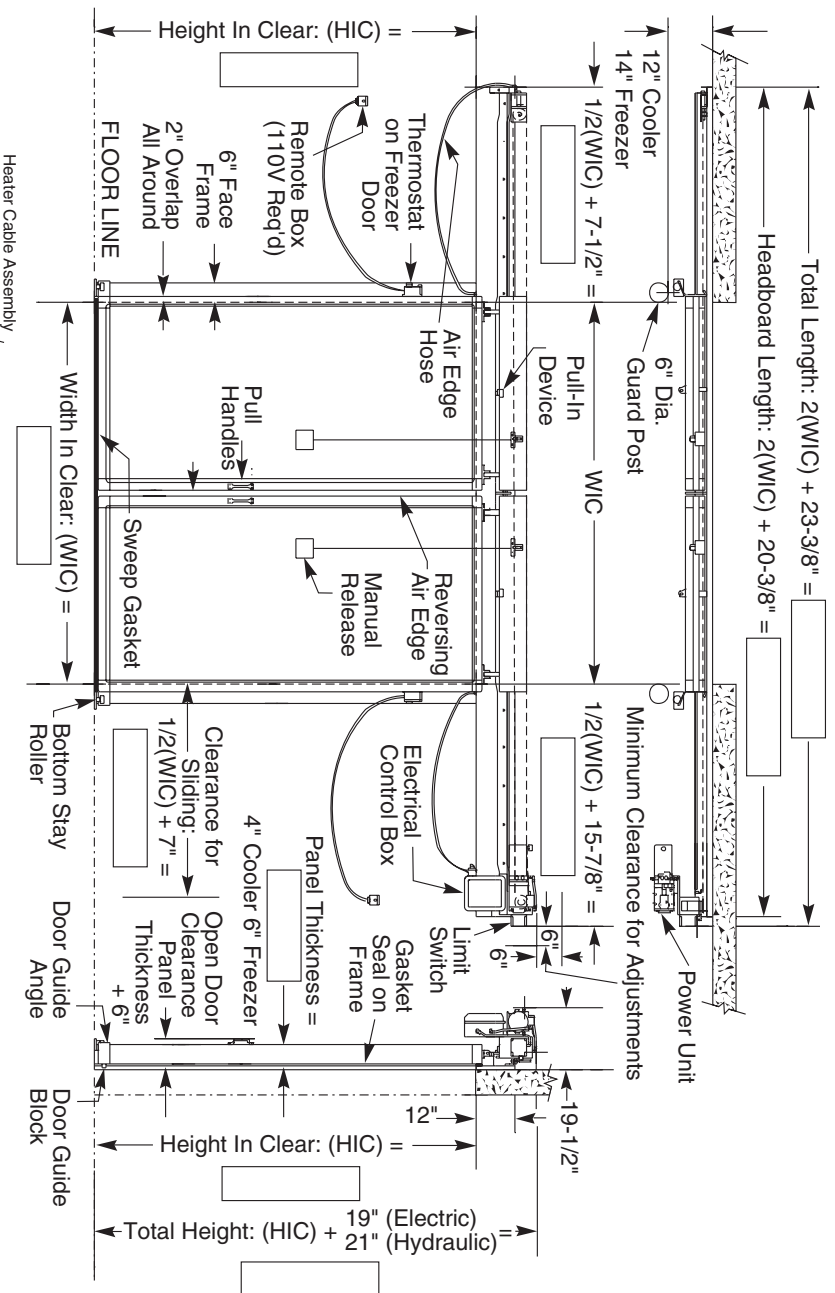


FEATURES

- Hydraulic power for speed and long life (50" per second). (HDS power 80" per second - optional.)
- Sealed and unitized high strength panel with reinforced steel sub-frames for dimensional stability.
- Cast "almag" corners and raised 16 gauge edge capping for added strength and protection.
- PLC (Programmable Logic Controls).
- Full perimeter adjustable gasketing.
- Internal steel mounting plates for solid hardware anchoring.
- Heavy duty steel hardware.
- Reversing edge provides instant stop/reverse with no mechanical lag time.
- Top/bottom guidance system positively maintains door position; insures fast, controlled operation; minimizes gasket wear.
- Adjustable top/bottom panel hardware for in-field adjustments, maintains positive pull-in and insures tight sealing.
- 5 year hydraulic operator warranty.



Model 506 Shown



DESIGN AND CONSTRUCTION

DOOR SIZES

- Minimum: 5' x 7'
- Maximum: 14' x 14' - Bi-Part; 10' x 14' Single Slide.
- **Other sizes available - consult factory.*

PANEL CONSTRUCTION

- Unitized design.
- 16 gauge formed galvanized steel edge capping and recessed panel for added protection.
- Shell construction of 24 gauge galvanized steel.
- Cast "Almag" corners.
- 11 gauge steel sub-frame and hardware mounting plates.
- Full perimeter gaskets.

OPERATION

- PLC (Programmable Logic Controls).
- VFD (Variable Frequency Drive) on HDS System.
- Manual.
- *(*Inches per second)*

DOOR SPEEDS

- **Single Slide:**
 - Electric (mechanical) (18 ips* travel speed).
 - Hydraulic (standard) (25 ips* travel speed).
 - HDS - Hydraulic Dual Speed operator - (optional) (50 ips* open), (25 ips* close).
- **Bi-Parting:**
 - Electric (mechanical) (36 ips* travel speed).
 - Hydraulic (standard) (50 ips* travel speed).
 - HDS - Hydraulic Dual Speed operator - (optional) (80 ips* open), (40 ips* close).

HYDRAULIC SYSTEM

- High output hydraulic pump driven by 1 hp totally enclosed motor.
- Low speed high torque motor.
- High pressure hydraulic hoses.
- NEMA-4 rated fiberglass

PERFORMANCE FEATURES

- Pneumatic reversing edge for instant stop/reverse.
- Manual inside emergency release.

INSULATION

- 3" or 5" poured polyurethane foam, R25 or R41 rated.
- K factor of .12 at 75°F.

WARRANTY

- 5 year on hydraulic operator.
- 1 year on all other components.

OPTIONS

- Heater cable.
- Thermostat heat control.
- Inside trim.
- Panel; stainless steel or white embossed metal.
- Frame and header; stainless steel or white embossed metal.
- Color (consult factory).
- Pedestrian opening (in door pushbutton for partial opening - automatic time delay close, all adjustable).
- Extra pull cord or single push button actuators (2-pull cord standard) or photoeye actuator or reversing photoeye.
- Radio control actuator.
- Loop detector system actuator.
- Padlock hasp:
 - a) Outside hasp.
 - b) Inside hasp flush mount.
 - c) Lock with power cut off.
 - d) Lock with power cut off and inside emergency release.
- Shroud for rail.
- Steel self-support system.
- Remote mount hydraulics operation.
- Windows, 12" x 12" 2 or 3 life, heated or unheated.
- Future power.
- Track port.
- Angle front heated sill.

ASI Technologies, Inc.



5848 N. 95th Court • Milwaukee, WI 53225 • (414) 464-6200 • (800) 558-7068 • FAX: (414) 464-9863 • www.asidoors.com

Consistent with our policy of continued product improvement, we reserve the right to change product specifications without notice or obligation.

©2002, ASI TECHNOLOGIES, INC. • PRINTED IN U.S.A.

503-506 7/2004R

For complete Architectural Specifications contact ASI or visit www.asidoors.com