

Single Piece Vertical Rise Metal Door

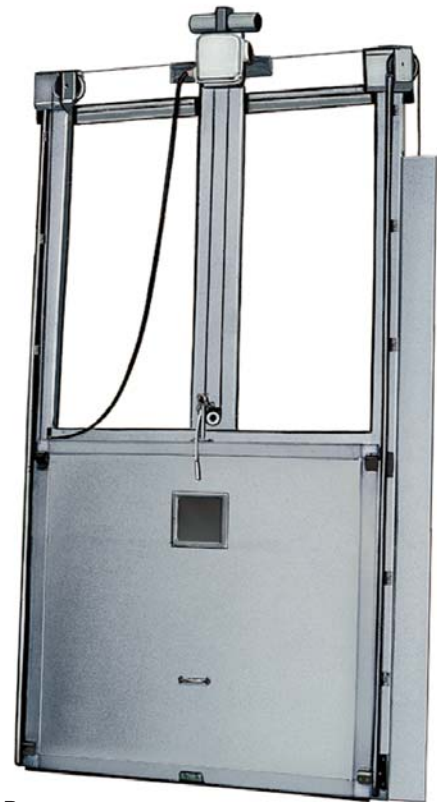
Cooler or Freezer Application
Manual and Power Operated

Data Sheet
Model 508



Manual

Shown with Optional Vision Panel



Power

FEATURES

- Premier quality vertical rise door ideal for areas with side clearance restrictions.
- Unitized high strength galvanized steel panel with pour-type polyurethane insulated core and 20 ga. galvanized steel finish. Available in 24 ga. embossed white stucco, 20 ga. stainless steel, or other colored metals. USDA approved.
- Internal steel mounting plates for solid hardware anchoring.
- Adjustable "down and in" panel action provides positive seal and reduces gasket wear.
- Synthetic grease-resistant fully adjustable gaskets at four sides for positive seal.
- Adjustable counter balancing weight system which eliminates costly torsion springs.
- Full perimeter gaskets.
- Heavy-duty hardware.
- 16 ga. formed galvanized steel capping with cast "Almag" corners.
- Instant reversing edge along full width and travel of door.
- Freezer door provided with "No Frost" heater cable system. Fully adjustable thermostatic control.

Power Models also include:

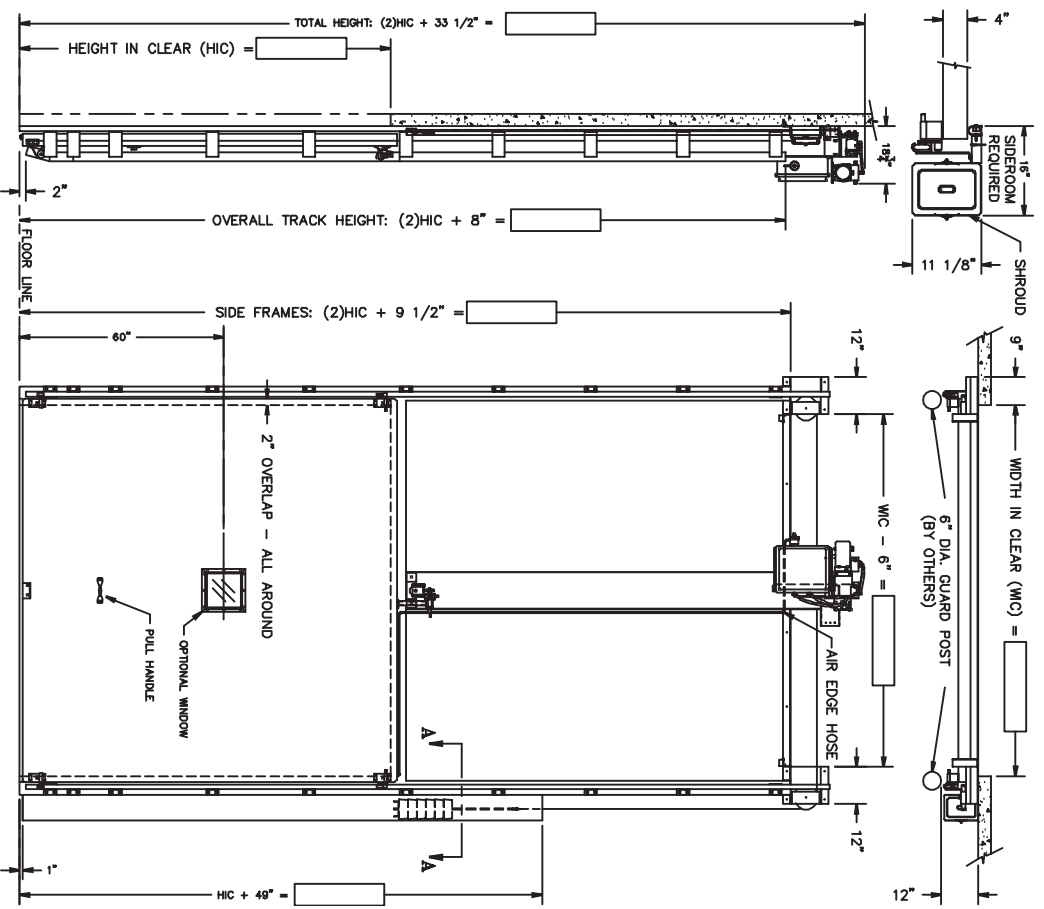
- Standard electro-mechanical operation for speed and long life (18" per second). Optional hydraulic operation (25" per second).



enviro®

Cold Storage Doors

Model 508 Power



For complete Architectural Specifications
contact ASI or visit www.asidoors.com

ASI

Technologies, Inc.



DESIGN AND CONSTRUCTION

DOOR SIZES

- Minimum: 5' x 7'.
- Maximum: 10' x 12'.

**Other sizes available - consult factory.*

PANEL CONSTRUCTION

- Untized high strength galvanized steel panel with pour-type polyurethane insulated core and 20 ga. galvanized steel finish. USDA approved.
- Internal steel mounting plates for solid hardware anchoring.
- 16 ga. formed galvanized steel capping with cast "Almag" corners.
- Galvanized steel vertical casings.
- Full perimeter gaskets.

OPERATION

- Electro-mechanical at 18"/second.
- Optional hydraulic at 25"/second.
- Manual.

HYDRAULIC SYSTEM

- High output hydraulic pump driven by totally enclosed electric motor.
- Low speed, high torque hydraulic motor.
- High pressure hoses.
- NEMA-4 rated fiberglass control box.

PERFORMANCE FEATURES

- Instant reversing edge along full width and travel of door.
- Manual override.

INSULATION

- 4" or 6" poured polyurethane foam. R33 or R50 rated.
- "K" factor of .12 at 75°F.

COUNTERWEIGHT ASSEMBLY

- Adjustable cast iron stack weights; extra weights furnished.
- 3/16" aircraft cable w/adjustable turnbuckle.

WARRANTY

- 1 year limited warranty on materials or workmanship.
- 5 years limited warranty on hydraulic operator.

OPTIONS

- 24 ga. embossed white stucco or 20 ga. stainless steel finish.
- Other colored metals (consult factory).
- Inside trim.
- Kickplates on door and frame.
- Extra pull cord or single push button actuators (2-pull cord standard).
- Activation Devices:
 - Photoeye or reversing device.
 - Radio control.
 - Loop detector.
- Slide bolt locking (one or both sides).
- Remote mount hydraulic operator.
- Window 12" x 12", 2 or 3 lite, heated or unheated.
- Pre-announce to close kit (light/alarm/or combo).

5848 N. 95th Court • Milwaukee, WI 53225 • (414) 464-6200 • (800) 558-7068 • FAX: (414) 464-9863 • www.asidoors.com

Consistent with our policy of continued product improvement, we reserve the right to change product specifications without notice or obligation.

©2003, ASI TECHNOLOGIES, INC. • PRINTED IN U.S.A.